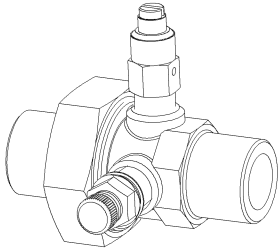


JOB:	REPRESENTATIVE:	
UNIT TAG:	ORDER NO.	DATE:
ENGINEER:	SUBMITTED BY:	DATE:
CONTRACTOR:	APPROVED BY:	DATE:



Model UA Union Accessory

DESCRIPTION

The Bell & Gossett UA is a combination union, component isolation, and commissioning accessory for use in HVAC systems. Union Accessories are furnished with one manual air vent and one pressure/temperature port for commissioning. A variety of pipe connections are available on both the fixed and union ends.

CONSTRUCTION

Body: C37000 Brass
 Taps: Two ¼" NPT spaced 90° apart
 O-Rings: EPDM

MAXIMUM WORKING PRESSURE

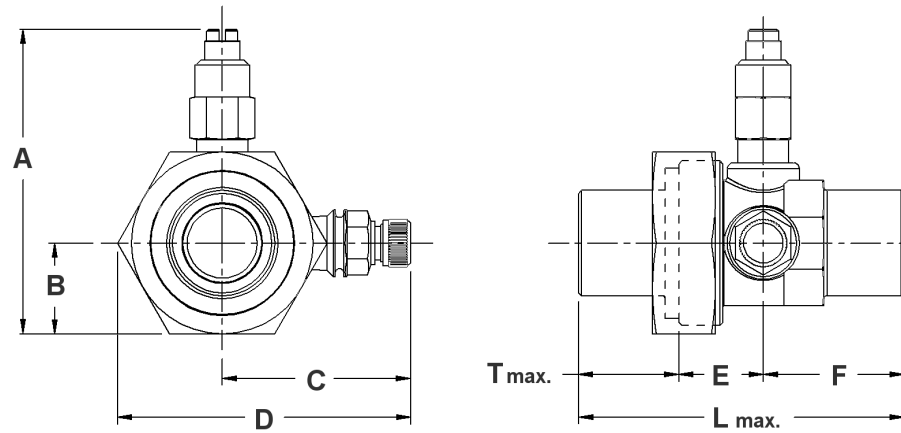
400 psig (2,758 kPa)

MAXIMUM OPERATING TEMPERATURE

-4°F (-20°C) to 250°F (121°C)

SCHEDULE

VALVE SIZE FIXED END	TAGGING INFORMATION	QUANTITY
½" Sweat Female		
½" NPT Female		
½" NPT Male		
¾" Sweat Female		
¾" NPT Female		
¾" NPT Male		
1" Sweat Female		
1" NPT Female		
1¼" Sweat Female		
1¼" NPT Female		
1½" Sweat Female		
1½" NPT Female		
2" Sweat Female		
2" NPT Female		



Valve Size Fixed End	Connection Fixed End	DIMENSIONS* INCH (mm)								Approx. Weight Lbs.
		A	B	C	D	E	F	T (Max)	L (Max)	
½"	Sweat Female	2.76 (70.1)	0.73 (18.4)	1.95 (49.4)	2.76 (70.0)	0.89 (22.6)	1.22 (30.9)	1.55 (39.4)	3.66 (92.9)	1.1 (0.5)
½"	NPT Female	2.76 (70.1)	0.73 (18.4)	1.95 (49.4)	2.76 (70.0)	0.89 (22.6)	1.08 (27.4)	1.55 (39.4)	3.52 (89.4)	1.2 (0.5)
½"	NPT Male	2.76 (70.1)	0.73 (18.4)	1.95 (49.4)	2.76 (70.0)	1.08 (27.4)	1.78 (45.2)	1.55 (39.4)	4.41 (112.0)	1.5 (0.7)
¾"	Sweat Female	2.98 (75.6)	0.88 (22.2)	2.01 (51.1)	2.96 (75.2)	0.86 (21.8)	1.28 (32.5)	1.55 (39.4)	3.59 (93.7)	1.3 (0.6)
¾"	NPT Female	2.98 (75.6)	0.88 (22.2)	2.01 (51.1)	2.96 (75.2)	0.86 (21.8)	1.18 (29.8)	1.55 (39.4)	3.59 (91.0)	1.4 (0.6)
¾"	NPT Male	2.98 (75.6)	0.88 (22.2)	2.01 (51.1)	2.96 (75.2)	1.12 (28.4)	1.69 (42.9)	1.55 (39.4)	4.36 (110.7)	1.8 (0.8)
1"	Sweat Female	3.19 (81.1)	0.97 (24.6)	2.14 (54.2)	3.19 (80.9)	0.89 (22.7)	1.51 (38.4)	2.00 (50.8)	4.41 (111.9)	1.6 (0.7)
1"	NPT Female	3.19 (81.1)	0.97 (24.6)	2.14 (54.2)	3.19 (80.9)	0.89 (22.7)	1.23 (31.2)	2.00 (50.8)	4.96 (104.7)	1.8 (0.8)
1¼"	Sweat Female	3.73 (94.7)	1.24 (31.6)	2.40 (60.8)	3.80 (96.5)	1.08 (27.3)	1.89 (47.9)	2.00 (50.8)	4.12 (126.0)	2.4 (1.1)
1¼"	NPT Female	3.73 (94.7)	1.24 (31.6)	2.40 (60.8)	3.80 (96.5)	1.08 (27.3)	1.25 (31.6)	2.00 (50.8)	4.3 (109.7)	2.5 (1.1)
1½"	Sweat Female	4.06 (103.1)	1.50 (38.1)	2.47 (62.7)	4.15 (105.5)	1.13 (28.6)	1.88 (47.6)	2.52 (64.0)	5.52 (140.2)	3.4 (1.5)
1½"	NPT Female	4.06 (103.1)	1.50 (38.1)	2.47 (62.7)	4.15 (105.5)	1.13 (28.6)	1.50 (38.1)	2.52 (64.0)	5.15 (130.7)	3.6 (1.6)
2"	Sweat Female	4.79 (120.9)	1.88 (47.8)	2.79 (70.9)	4.74 (120.4)	1.10 (27.9)	1.94 (49.2)	3.14 (79.8)	6.2 (156.9)	5.0 (2.3)
2"	NPT Female	4.79 (120.9)	1.88 (47.8)	2.79 (70.9)	4.74 (120.4)	1.10 (27.9)	1.65 (41.9)	3.14 (79.8)	5.89 (149.6)	5.6 (2.5)

*All dimensions +/- 0.125 (3.2 mm) tolerance. Dimensions are subject to change. Not to be used for construction purposes unless certified.

